

GATCON

TYRE SELECTION

VM-1 TYRES FOR STEERING & DRIVING AXLE, CONSTRUCTION SITES & COMMUNAL SERVICES

DM-1 TYRES FOR DRIVING AXLE, CONSTRUCTION SITES AND OFF – ROAD

TM-1 TYRES FOR TRAILERS AND SEMITRAILERS, CONSTRUCTION SITES AND OFF – ROAD



GATCON
TRADING AND CONSULTING

www.gatcon.eu

MIXED SERVICE



MIXED SERVICE AND OFF ROAD



VM-1

VM-1

STEER



VM-1

DM-1

DRIVE



TM-1

TM-1

TRAILER



VM-1 TYRES FOR STEERING & DRIVING AXLE, CONSTRUCTION SITES & COMMUNAL SERVICES



APPLICATION:

- For construction and communal services transport
- For steering and driving axle

ADVANTAGES:

- A special universal tread pattern. Can be installed on steering and driving axles. Provides economic efficiency when used on construction sites.
- A new SMART-ENDURANCE rubber blend increases resistance to abrasion wear (cuts, punctures, block separation, etc.) and decreases tread wear.
- Strengthened U-scheme tyre bead under STEEL-FORCE technology. A special rim strip with metal cord strengthens bead zone and increases the safety in complicated conditions.
- A technology of bead ring wound of separate wire - Winding ring bead – reduces tension in bead zone, makes balancing and rim fitting easier. A reliable bead ring with hard rim fitting provides hermeticity.



TYRE SIZE	LOAD INDEX	SPEED INDEX
315/80R22,5	156/150	110(K)
13R22.5	154/150	K (110), G (90)
11R22.5	148/145	110(K)



DM-1 TYRES FOR DRIVING AXLE, CONSTRUCTION SITES AND OFF – ROAD



APPLICATION:

- For construction sites and off-road
- For driving axle

ADVANTAGES:

- A special aggressive tread pattern for harsh conditions with STONESHIELD protection from stones provides economic efficiency when used in construction sites and off-road.
- A new SMART-ENDURANCE rubber blend increases resistance to abrasion wear (cuts, punctures, block separation, etc.) and decreases tread wear.
- Strengthened U-scheme tyre bead with STEEL-FORCE technology. A high-tensile rim strip with metal cord strengthens bead zone and increases the safety in complicated conditions.
- Technology using bead ring wound of separate wire - winding ring bead – reduces tension in bead zone and makes balancing and rim fitting easier. A reliable bead ring with good rim fitting provides airtightness.



TYRE SIZE	LOAD INDEX	SPEED INDEX
315/80R22,5	156/150	110 (K)
13R22.5	154/150 (156/150)	110 (K), 90(G)
11R22.5	148/145	110(K)
12R22.5	152/148	110(K)



TM-1 TYRES FOR TRAILERS AND SEMITRAILERS, CONSTRUCTION SITES AND OFF – ROAD

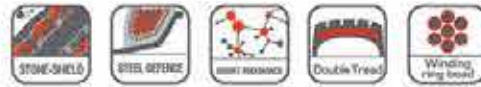


APPLICATION:

- For construction sites and off-road
- For trailers and semitrailers

ADVANTAGES:

- Aggressive tread pattern with massive sized blocks protects the shoulder area reducing the risk of damage. Increased tread depth for longer life.
- Excellent resistance to abrasion and cuts thanks to more durable special rubber compound as well as to the reinforced metal layers under the tread.
- A special rim cushion with metal cord strengthens the bead zone and increases reliability in difficult conditions.
- Technology of coiling the bead ring from separate wires - Winding ring bead – reduces tension in bead zone and makes wheel balancing and rim fitting easier. A reliable bead ring with good rim fitting provides airtightness.



TYRE SIZE	LOAD INDEX	SPEED INDEX
385/65R22,5	160	110(K)





For further information and enquiries, please visit our website:

www.gatcon.eu